

U. S. INDUSTRIAL MACHINERY

P.O. Box 2098 Memphis, TN 38101
 Phone: (800) 860-1850 Fax: (901) 526-2339
www.usindustrial.com

Dear Customer:

Thank you for the opportunity to quote. We are pleased to offer the following equipment for your consideration:

NEW – U.S. Industrial Model USG1224-AHD TOOLROOM SURFACE GRINDER as configured below:

*Description: This is a medium duty toolroom Surface Grinder with hydraulic reciprocation of table and electric motor power incremental setting crossfeed and automatic downfeed increment is programmed on touchscreen. **This is a THREE-AXIS Automatic Surface Grinder.***

Standard Equipment:

- | | |
|---|-------------------------------|
| Grinding wheel | Wheel flange |
| Balancing base and arbor | Toolbox and tools |
| Over wheel dresser w/diamond | Coolant system |
| Manual one-shot lube | Sino Two-axis digital readout |
| Permanent Magnetic Chuck: 11.8" x 23.6" | |

- | | | |
|--|----------|------------------|
| Model USG1224-SY..... | \$ | 28,990.00 |
| Semi Fine Pole Permanent Chuck, 11.8" x 23.6"..... | Included | |
| Wet coolant system..... | Included | |
| Touch Screen cold LCD with DRO for Cross/downfeed..... | Included | |
| Hydraulic reciprocation of table..... | Included | |
| Electric motorized crossfeed..... | Included | |
| Power elevation to spindle..... | Included | |
| Overwheel (Parallel) diamond dresser..... | Included | |

TOTAL PRICE.....F.O.B. Memphis, TN.... \$ 28,990.00

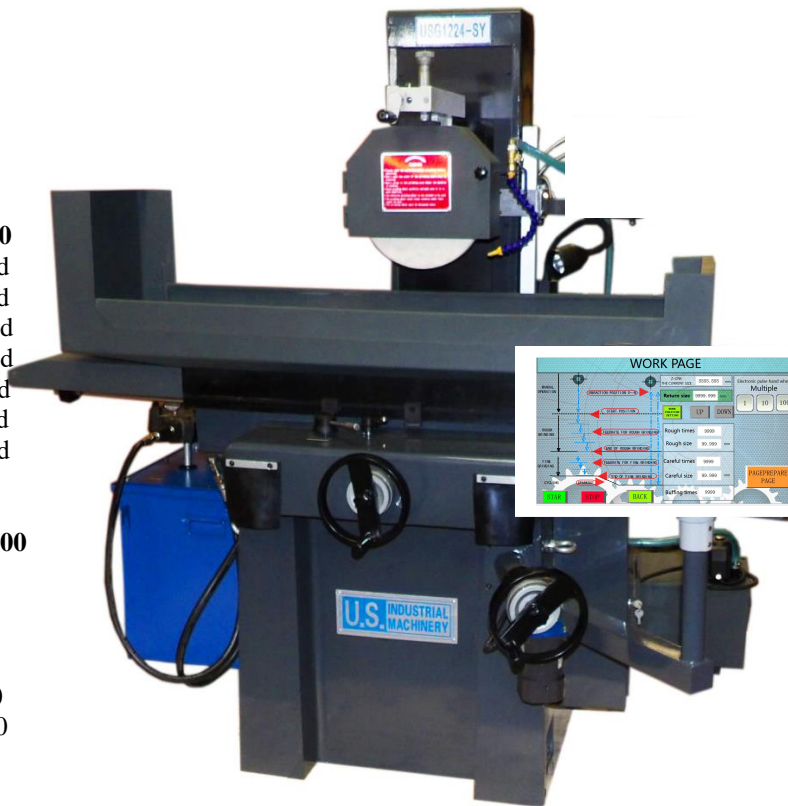
Voltage is 220 or 440 Volts, 3 phase, customer choice.

Options:

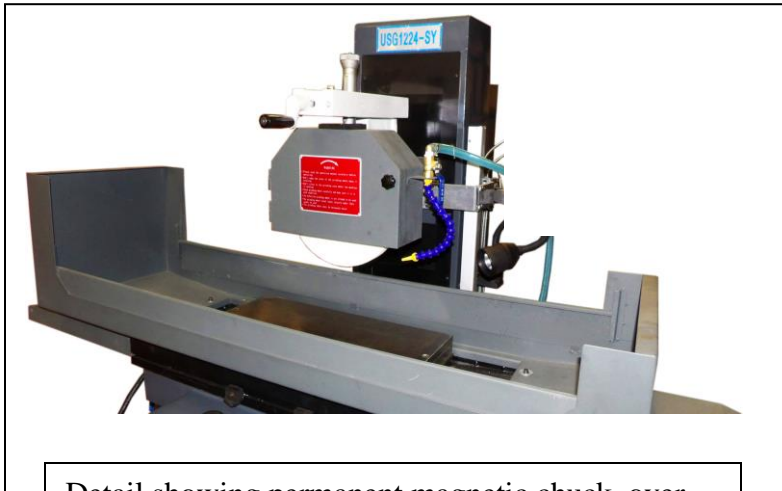
- | | |
|---|----------|
| Extra general purpose factory grinding wheel..... | \$ 52.00 |
| Extra wheel flange..... | \$ 95.00 |

MAIN SPECIFICATIONS

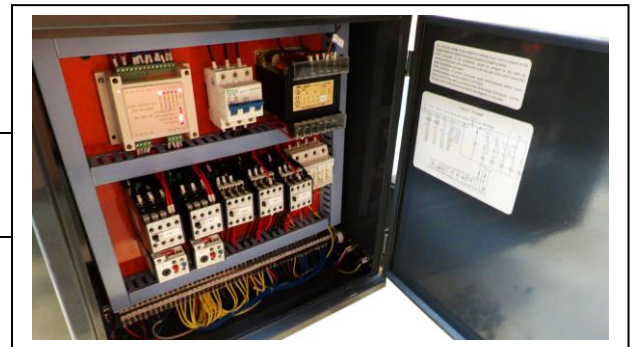
- | | |
|---|----------------------------|
| Parallelism & Flatness Accuracy: | <0.0008" |
| Max. Travel (Longitudinal x Cross): | 24.8" x 12.6" |
| Max. Distance Spindle Center To Table:..... | 20.5" |
| Max Grinding Wheel (ODxTxID):..... | 300mm x 76.2mm x 30mm |
| (Supplied with one 12" x 1-1/4" grinding wheel) | |
| Grinding Wheel speed:..... | 1680 rpm |
| Spindle Motor:..... | 3 HP |
| Hyd. unit Motor..... | 3 HP |
| Machine weight..... | 3,400 lbs (Gross Shipping) |
| Dimension, crated for shipping..... | 56"W x 72"L x 76"T |



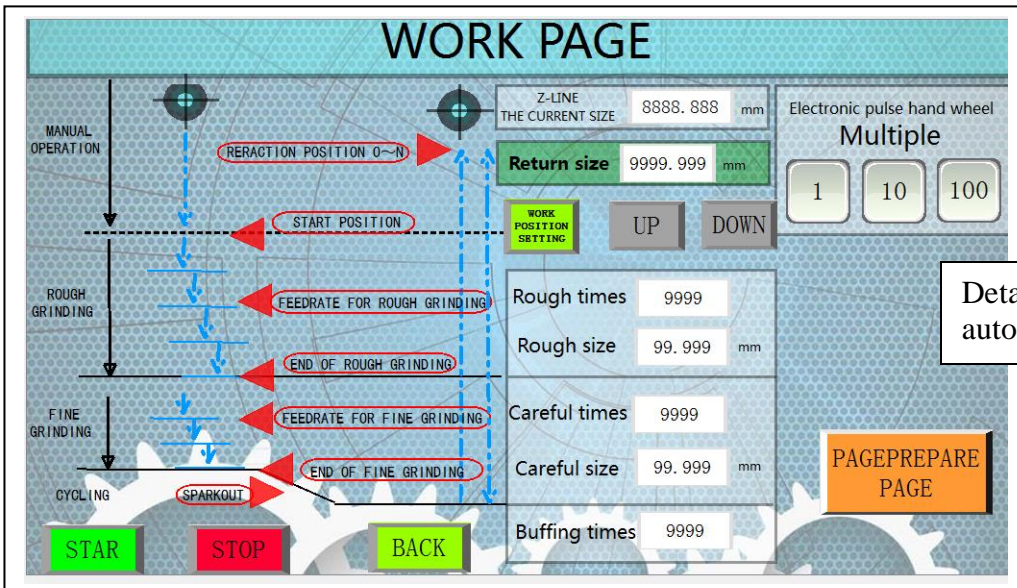
Page 2 – USG1224-SY Surface Grinder



Detail showing permanent magnetic chuck, over wheel diamond dresser, flood coolant nozzle



Detail showing electrical cabinet, with disconnect and fuse holders.



Detail showing LCD touch panel with automatic down feed programming.

Thank you for the opportunity to quote. We look forward to serving you.

Sincerely,

U. S. Industrial Machinery

May 2021