

[www.usindustrial.com](http://www.usindustrial.com)

Visit Our Website at

We are pleased to offer the following equipment for your consideration:

**ONE (1) NEW U.S. INDUSTRIAL 9" X 49" MANUAL VARIABLE SPEED VERTICAL MILLING MACHINE**

**Model Number: 2VH-3**

**STANDARD FEATURES AND EQUIPMENT:**

- 9" x 49" table with 3 T-slots, 5/8", on 2.5" centers Table travel is 33". Leadscrew pitch is 5TPI with dials on each end graduated in .001".
- Travel of cross feed is 12" with .001" dial graduations
- Knee travel is 15.74" with 10TPI leadscrew, .001" dial graduations
- Ram allows for over 12" of travel, for variable throat depth
- Conventional dovetail ways on X, Y and Z Axis..... Double locks on all axis
- Aged stressed castings, stress relieved for long life and accuracy, Meehanite type
- Power quill feed allows for 0.0018, 0.003, 0.006 Inches of feed per revolution of spindle
- Hardened and ground and precisely scraped work table, saddle and knee ways
- Centralized one-shot lubrication pump lubricates all way surfaces and leadscrews
- Backlash adjustment for leadscrews, Gib adjustments for ways
- Electrical cabinet with internal transformer for 110V and 24V devices, circuit breaker protected, Low Voltage controls, 24 volt halogen machine light.  
Transformer also includes power supply for digital readout and power table feed.
- Operator low voltage controls for coolant pump, machine light, main power with emergency stop button. Spindle off/forward/reverse switch.
- Built in coolant tank base with coolant pump, pressure and return hose , nozzle and valve, Installed and ready to use. Base chip pan to help prevent coolant overflow.
- **Manual** variable speed spindle drive, 3 Horsepower runs the spindle from 60 to 4200 RPM. Spindle speed dial on head shows RPM in direct drive and back gear. Spindle motor is finned for cooling.
- **Sino** three axis digital readout has 0.0002" resolution. Readout comes mounted to knee, table and cross and is ready to use. The readout is inch/metric switchable, with absolute incremental function. There is a calculator function, bolt hole pattern function, line pattern function, and arc calculate function. A comprehensive manual is included.
- Power table feed is **Align** model AL500SP. Infinitely variable feed from .8 to 32 IPM with rapid button, on/off switch, and adjustable travel stops. This heavy duty power feed has 150 inch pounds of torque, with max to 650. Power table feed comes installed on machine, ready to use.
- Toolbox and tools, manuals, electrical drawing, test certificate all included.



\*\*\* continued on Page 2 \*\*\*

October 2021

**U.S. INDUSTRIAL MACHINERY**

**Page 2 - NEW U.S. INDUSTRIAL 9" X 49" MANUAL  
VARIABLE SPEED MILLING MACHINE, Model Number: 2VH-3-KIT**

**SPECIFICATIONS:**

Working Surface.....	9" x 49"
Longitudinal Travel.....	29" with powerfeed (33" without powerfeed) (Powerfeed stops prevent overtravel)
Cross Travel.....	12" (11" with readout installed)
Vertical Travel.....	.15.74
Ram Travel.....	12"
Head tilt, left to right.....	90 degrees left, 90 degrees right with degree ring scale
Head Tilt, front to back.....	45 degrees front, 45 degrees back with degree ring scale
Ram Circular Movement.....	360 Degree with degree ring scale T-
Slots.....	3 with 2 1/2" centers, 5/8" Ea.
Spindle Drive.....	3 HP
Spindle Range (Manual Vari-speed sheeve).....	60-4200 Variable with Direct Drive and Back-gearred
Spindle Type.....	R-8
Quill Travel & Diameter.....	5" travel and 3 3/8" diameter
Power quill feed range, Inches per rev.....	.00018", 0.003", 0.006"
Weight of Work Piece, max.....	500 lbs
Spindle Motor.....	3 HP, 208-240 volt or 440/460/480 volt, 3 phase spindle motor motor- standard
Electrics.....	208-240V or 440/460/480V, 3 phase – pick one
Machine, Net Weight.....	2,550 lbs

\*\*\* Continued on Page 3 \*\*\*

# U.S. INDUSTRIAL MACHINERY

P.O. BOX 2098 MEMPHIS, TN 38101

PHONE: (800) 860-1850 FAX: (901) 526-2339

Visit Our Website at [www.usindustrial.com](http://www.usindustrial.com)

Page 3 - NEW U.S. INDUSTRIAL 9" X 49" MANUAL  
VARIABLE SPEED MILLING MACHINE, Model Number: 2VH-3-KIT

**Standard Configuration of KIT Machine: (All items already installed on machine!)**

Options you may wish to purchase: (All items will be installed on machine.)

- Air Power Drawbar, pneumatic, installed..... (UPM1501)
- Bestline Power Feed for Y-axis (cross feed)..... (UPM1502)
- Bestline Power Feed for Z-axis (knee feed)..... (UPM1503)
- Mill QC collet set, 1 holder R-8 to ER32, 1 spanner for collet nut,  
11 ER32 collets from 1/8" to 3/4", all in form fitted case..... (UPM1504)
- Clamp kit including: bolts, nuts, step blocks, fingers, for fixturing..... (UPM1505)
- Precision Parallel Set, several matched parallels in form case..... (UPM1506)
- Milling vise, 6" lock type..... (UPM1507)
- R-8 collet set, 11 pieces..... (UPM1508)

We await your reply and thank you for this opportunity to quote.

Sincerely,

U.S. Industrial Machinery

\*\*\* SEE NEXT PAGE FOR PHOTOS AND IMPORTANT INFORMATION \*\*

October 2021

# U.S. INDUSTRIAL MACHINERY

P.O. BOX 2098 MEMPHIS, TN 38101

PHONE: (800) 860-1850 FAX: (901) 526-2339

Visit Our Website at [www.usindustrial.com](http://www.usindustrial.com)

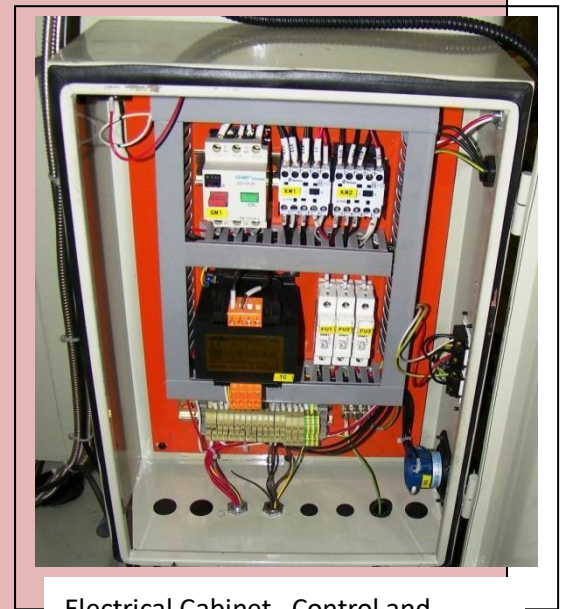
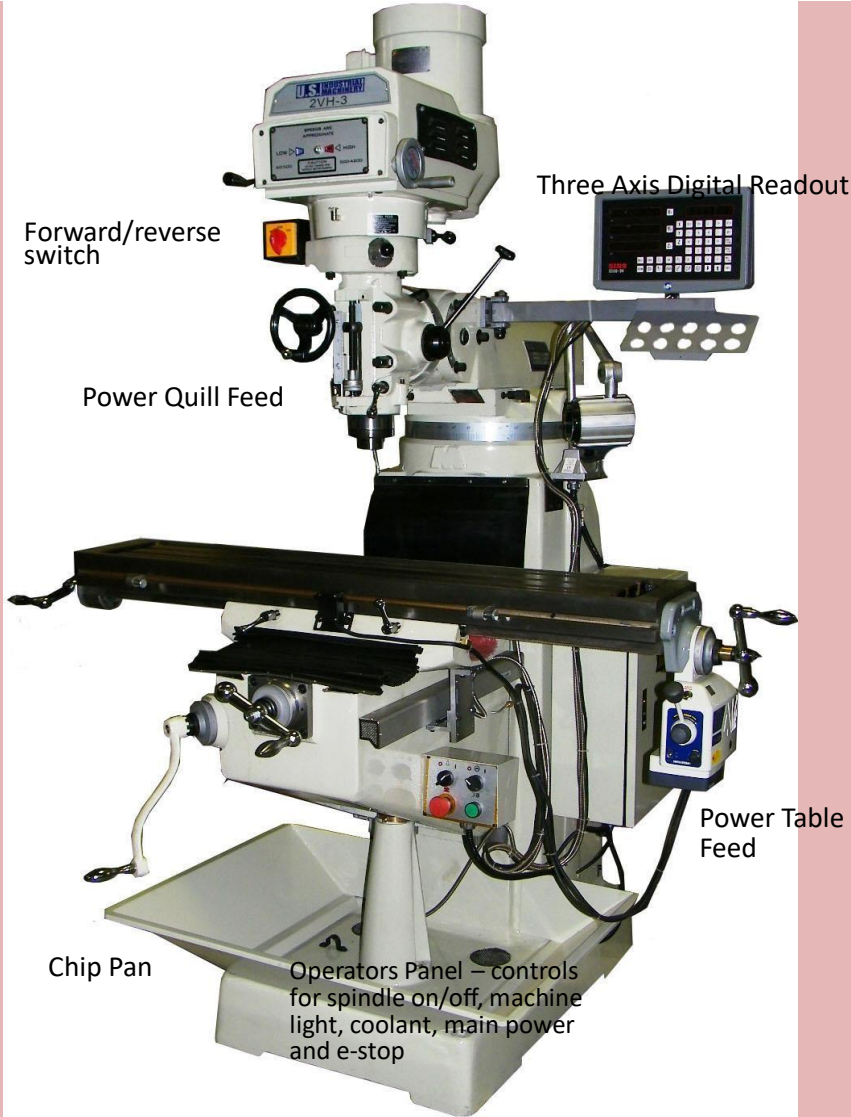
*U. S. Industrial Machinery*

*Vertical Milling Machine*

*Model 2VH-3*



SINO 3-Axis digital readout measure table, cross and knee travel, inch/metric, and multi-functionality



Electrical Cabinet –Control and accessory power transformer, circuit breakers and main disconnect.

**Variable Speed**