

Visit Our Web Site at www.usindustrial.com

**ONE (1) NEW U.S. INDUSTRIAL 26" X 120" PRECISION GEARED HEAD ENGINE LATHE
MODEL USL26120**

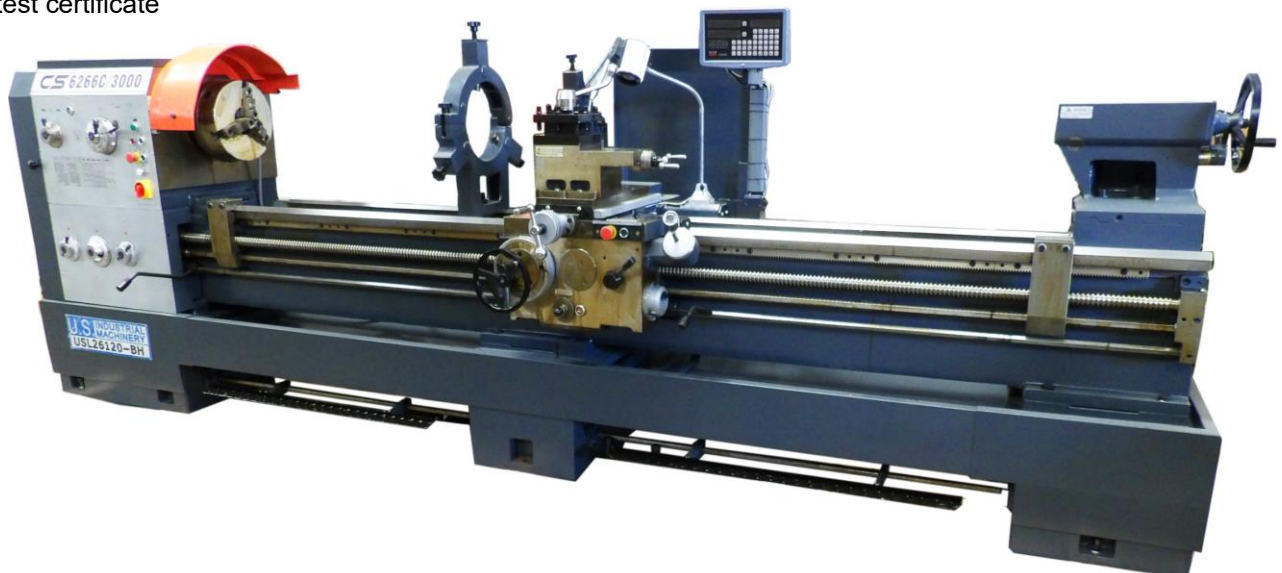
Spindle bore will pass 4"

This precision, **heavy duty geared head engine lathe** incorporates hardened and precision ground bedways on longitudinal and cross ways, and wide, precision ground gears. It has a gap-bed design, feed-rod/lead screw safety interlock system, weight bearing tailstock and forward/reverse levers at both the aprons and the head stock.

As with all U.S. Industrial lathes, it comes with a plethora of standard accessories, 3 and 4-jaw chucks, follower and steady rests, 4-way rapid travel, work lamp, a coolant system and an operator/service manual.

Standard Equipment: (Items below are INCLUDED with the machine)

- 12" 3-jaw chuck. Universal, self-centering with an American standard tongue and groove top Jaws.
- 16" 4-jaw independent chuck
- Steady rest
- 4-way toolpost
- Thread Dial
- Work lamp
- Flood coolant system
- Sino 2-axis digital readout inch/metric **(installed)**
- Inch reading dials on Apron, Cross-Slide and compound
- Manual with test certificate
- 25" Face Plate & Dog Plate
- Foot brake with microswitch and brake
- Follow rest
- 4-way rapid travel
- Safety chuck shield
- Taper attachment **(installed)**
- Large spindle bore to pass 4"
- Traveling Backsplash Behind Apron
- Slide out chip pans



U.S. INDUSTRIAL MACHINERY

P.O. BOX 2098

MEMPHIS, TN 38101

PHONE: (800) 860-1850

FAX: (901) 526-2339

Visit Our Web Site at www.usindustrial.com

Specifications and important information:

Swing Over Bed	26" (660mm)
Swing Over Cross-Slide	16.53" (420mm)
Swing Over Gap	34.25" (870mm)
Gap Length	9.44" (240mm)
Maximum Workpiece Length with 3-jaw chuck	118" (3000mm)
Maximum Turning Length	116" (2950mm)
Spindle Bore	4.134" (105mm)
Spindle Type	D1-8 Camlock
12 Spindle Speeds	36 to 1600 RPM
65 Longitudinal Feeds	.0023 to .0937 IPR
65 Cross Feeds	.0011 to .0404 IPR
22 Metric Threads	1 to 14mm
27 Inch Threads	2 to 28 TPI
18 Module Threads	0.5 to 7mm
24 Diametral Pitch Threads	4 to 56 DP
Compound Rest Travel	5.75"
Cross-Slide Travel	12.125"
Tailstock Taper	No. 5 Morse Taper
Tailstock Spindle Travel	5.906" (150mm)
Tailstock Spindle Diameter	2.953" (75mm)
Main Motor HP	10 HP (7 kw) 220V or 440V, 3-Phase
Rapid Feed Motor	0.4 HP
Coolant Pump Motor	.16 HP, 11 gallons per minute
Lathe Gross Weight	8,500 lbs.
Dimensions	183" long, 40" wide, 55" tall

(Order Model Number: USL26X120BH-KIT)

AVAILABLE OPTIONS:

Quick Change Toolpost Kit with Holders.....	(QCTP20-26)
ISO Cutting Tool Package.....	(ISOSET20-26)

We await your reply and thank you for this opportunity to quote.

Sincerely,

U.S. Industrial Machinery

U.S. INDUSTRIAL MACHINERY

P.O. BOX 2098

MEMPHIS, TN 38101

PHONE: (800) 860-1850

FAX: (901) 526-2339

Visit Our Web Site at www.usindustrial.com

Detail of Headstock



Standard Accessories included with Lathe.



Also includes steady rest, follow rest, 3-jaw chuck, and 2-axis DRO
See pic on Page 1.

Apron with travelling digital readout display, follow rest, steady rest, taper attachment, rapid travels.



View from back of lathe shows travelling backslash.

QUICK CHANGE TOOLPOST OPTION – (Replaces standard four-way toolpost)

Thank you for the opportunity to quote. We are pleased to offer the following equipment for your consideration:

ONE – NEW QUICK CHANGE TOOLPOST WITH FIVE HOLDERS, FOR FACTORY ONLY INSTALL ON USL SERIES LATHES

**Wedge style Kit, #444 for our Lathes for 1" Square tools. This comes with
Part off holder, knurling holder, boring bar holder, and two 1" SS holders**

(This ships only installed on lathe.)

**This is custom installation AND not available after machine ships.
Must be installed on lathe at time of order, prior to shipping.**

Extra holders are \$ 75.00 each.

QUICK CHANGE QC TOOL POST SETS

"Phase II quick change QC tool post sets advanced design provides built-in quick tool changing versatility with positive rigidity to meet the most exacting working tolerances.

Quickly and easily installed on an engine bench or turret lathe Phase II quick change QC tool post sets perform a wide range of operations from fine precise work to heavy duty cutting.

All parts are hardened, ground and completely sealed for maintenance free operation.

Maximum rigidity for chatter free performance.

Phase II quick change QC tool post sets are interchangeable with all industry leading brands by series."

EACH SET CONSISTS OF ONE TOOLPOST AND 5 HOLDERS, ONE OF EACH STYLE, #1, 2, 4, 7 AND 10.

PISTON TOOLPOST SETS

STOCK #	SWING
251-100	9-12"
251-200	10-15"
251-300	13-18"
251-400	14-20"

WEDGE TOOLPOST SETS

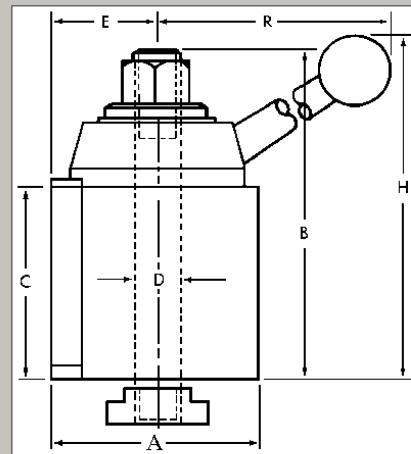
STOCK #	SWING
251-111	9-12"
251-222	10-15"
251-333	13-18"
251-444	14-20"
251-555	17-32"

Quick Change QC Tool Post Features:

- No chatter or vibration
- Quick swap of tools
- No Shims
- Guaranteed Repeatability



[Back to Product Listing](#)



	Stock No.	A	B	C	D	E	H	R	Swing
Piston Style	250-100	2 1/2"	3 7/8"	2 1/4"	9/16"	1 7/16"	4 11/16"	5 3/4"	9-12"
	250-200	3"	4 5/8"	2 3/4"	5/8"	1 5/8"	5 9/16"	7 5/16"	10-15"
	250-300	3 3/8"	5 1/8"	3"	3/4"	1 7/8"	6 1/8"	7 7/8"	13-18"
	250-400	4"	6 1/4"	3 5/8"	7/8"	2 1/8"	7"	9"	14-20"
Wedge Style	250-111	2 1/2"	3 7/8"	2 1/4"	9/16"	1 3/8"	4 11/16"	5 3/4"	9-12"
	250-222	3"	4 5/8"	2 3/4"	5/8"	1 9/16"	5 9/16"	7 5/16"	10-15"
	250-333	3 1/2"	5 1/8"	3"	3/4"	1 29/32"	6 1/8"	7 7/8"	13-18"
	250-444	4"	6 1/4"	3 5/8"	7/8"	2 1/8"	7"	9"	14-20"
	250-555	5"	7 3/8"	4 5/8"	1"	2 11/16"	-	-	17-48"

Cutting Tool Package for U.S. Industrial Lathes:

This optional cutting tool package is designed to fit our QUICK CHANGE TOOLPOST option. It is not for the standard 4-way toolpost.

Tools included below are for:

- Rough and medium finishing of the part OD. Fine finish of the part ID
- Left- and right-hand tools for working left and right hand shoulders
- Tools for threading OD and ID Tools for boring the ID
- Part off tools And more.....

List of carbide cutting tools in KIT for US INDUSTRIAL LATHE: (ISO tools are imports.)

Note: Tools for 20" and 26" Lathes will be 1" square shank

Note: Customer MUST purchase option, OUR QC Toolpost set for install prior to shipping:

- 1 MWLN-R, 1" square, triangle insert, right hand.....
- 2 MWLN-L, 1" square, triangle insert, left hand.....
- 3 Box of 10 WNMG inserts for above.....

- 4 MCLN-R, 1" square, diamond insert, right hand.....
- 5 MCLN-L, 1" square, diamond insert, left hand.....
- 6 Box of 10 CNMG inserts for above.....

- 7 MVJN-R, 1" square, diamond insert, fine finish, right hand.....
- 8 MVJN-L, 1" square, diamond insert, fine finish, left hand.....
- 9 Box of 10 VNMG inserts, 1/64" nose radius.....

- 10 .SER-1000-SET, 1" square, for threading OD, with inserts.....
(This is a KIT and includes threading inserts.)

- 11. SIR-1000-SET, 1" round, for threading ID, with inserts.....
(This is a KIT and includes threading inserts.)

- 12. SCLCR-SET, Boring bars, .315", 3/8", 1/2", 5/8", 3/4" bars, with inserts.....
(This is a KIT and includes inserts.)

- 13. RH-MCLN, Boring bar, 1" diameter, 12" long.....
- 14. Use inserts in Item No. 6, CNMG.....

- 15. HSS Blade for part-off holder, high speed steel.....
Block, blade and 10 self-lock carbide parting/grooving inserts.....

- 16. Arbor and key chuck for tailstock.....
- 17. Live center for tailstock.....
- 18. Semi-synthetic coolant concentrate, 1 gallon.....