

CNC TORSION BAR PRESS BRAKES

USHB SERIES



More Than Machines — A Partner in Performance

U.S. Industrial's USHB Series press brakes offer a rugged design, low maintenance, and straight forward operation.

Model#	Tonnage	Working Length Inches	Working Length (Feet)	Distance Between Columns Inches	Throat Depth Inches	Ram Travel Inches	Open Height Inches	Ram Travel Adjustment Inches	Main Motor Horsepower	Approaching Inches	Pressing Inches	Return Inches	Dimensions (LWH) Inches	Oil Capacity (Gallons)	Weight (lbs)
USHB22-4	22	52.0	4	40.16	7.87	3.94	13.39	1.97	5	3.54	0.39	2.76	71" x 57" x 85"	21	5,292
USHB44-6	44	78.7	6	62.99	7.87	3.94	13.39	2.76	7.5	3.54	0.39	2.76	99" x 57" x 93"	21	6,836
USHB88-8	88	98.4	8	78.74	9.84	3.94	13.78	2.76	10	3.54	0.39	2.76	118" x 69" x 94"	37	10,143
USHB88-10	88	126.0	10	100.39	9.84	3.94	13.78	2.76	10	3.54	0.39	2.76	146" x 69" x 99"	53	13,230
USHB125-8	125	98.4	8	76.77	12.60	5.12	14.96	3.35	10	3.15	0.33	2.76	118" x 73" x 101"	37	14,333
USHB125-10	125	126.0	10	100.39	12.60	5.12	14.96	3.35	10	3.15	0.33	2.76	146" x 73" x 101"	53	17,199
USHB125-13	125	157.5	13	122.05	12.60	5.12	14.96	3.35	10	3.15	0.33	2.76	181" x 73" x 101"	53	20,507
USHB155-8	155	98.4	8	72.83	12.60	5.12	14.96	3.35	15	3.15	0.33	2.76	118" x 73" x 101"	53	15,435
USHB155-10	155	126.0	10	100.39	12.60	5.12	14.96	3.35	15	3.15	0.33	2.76	146" x 73" x 101"	53	18,743
USHB155-13	155	157.5	13	122.05	12.60	5.12	14.96	3.35	15	3.15	0.33	2.76	181" x 73" x 101"	53	22,050
USHB200-8	200	98.4	8	72.44	12.60	7.87	17.13	4.33	20	2.76	0.30	2.36	122" x 73" x 101"	53	19,845
USHB200-10	200	126.0	10	100.39	12.60	7.87	17.13	4.33	20	2.76	0.30	2.36	150" x 73" x 101"	53	22,050
USHB200-13	200	157.5	13	122.05	12.60	7.87	17.13	4.33	20	2.76	0.30	2.36	185" x 73" x 101"	53	25,358
USHB275-10	275	126.0	10	95.67	15.75	9.84	18.11	4.33	25	2.76	0.30	2.36	150" x 77" x 123"	87	31,311
USHB275-13	275	157.5	13	122.05	15.75	9.84	18.11	4.33	25	2.76	0.30	2.36	189" x 77" x 135"	87	36,383
USHB330-10	330	126.0	10	96.46	15.75	9.84	19.69	4.33	30	2.76	0.26	2.36	150" x 77" x 135"	106	38,588
USHB330-13	330	157.5	13	122.05	15.75	9.84	19.69	4.33	30	2.76	0.26	2.36	189" x 77" x 144"	106	47,408
USHB440-10	440	126.0	10	96.46	15.75	9.84	19.69	4.33	40	2.36	0.26	1.97	150" x 85" x 144"	106	44,100
USHB440-13	440	157.5	13	120.08	15.75	9.84	20.67	4.33	40	2.36	0.26	1.97	189" x 85" x 152"	106	51,818

All models are available in either CNC or manual controls. CNC models have a "C" and manual models have a "M" at the end of the model numbers. We offer custom size press brakes in 16' and 20' and up to 1,000 tons. Please call for pricing.

Standard Equipment



Standard Equipment Included on All Models

- Torsion bar design for parallelism
- ESA S930 CNC control
- Servo X-axis (back gauge positioning) - faster and more accurate
- Servo Y-axis (ram depth) - faster and more accurate
- OSHA required light curtains across the front of the machine
- Support arms across the front of the machine
- Photo-electric eye on rear of machine for added safety
- Forged heavy duty cylinders and cylinder bodies
- 3-speed ram
- Rapid approach, bending, and rapid retreat
- Bottom time delay
- Inching, cycle, and auto-run
- Versatile set of tooling including gooseneck punch and 4-sided die with multiple v-openings
- Space between ram clamps allows for deep box bending
- Versatile ram clamps that can accept standard tang tooling, American safety tang tooling, or European Z1 tooling

About ESA CNC Controllers

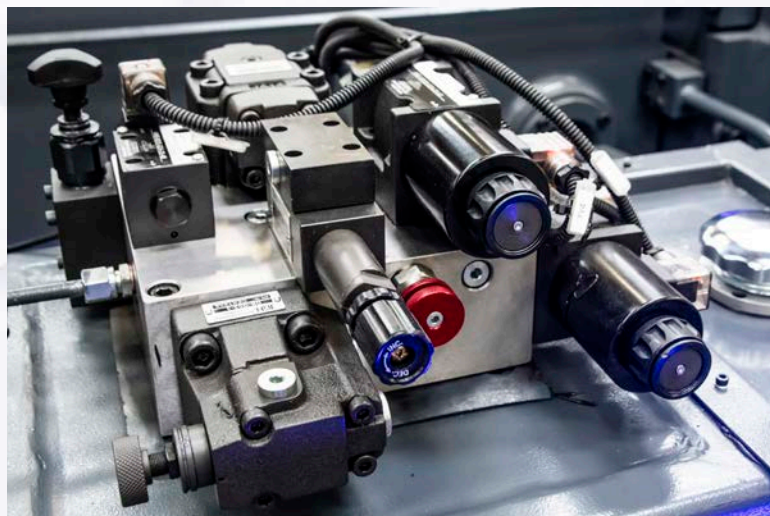


Our standard USHB Series press brake comes with an ESA S930 CNC control. ESA CNC controllers users a reliable and cost-effective solution for press brakes, making them an excellent option for operators that want advanced functionality without overspending. Known for being user-friendly, these controllers provide operators with the ability to quickly set up and run jobs with precision, reducing downtime and increasing efficiency. Their intuitive touchscreens and easy-to-follow programming allow even less experienced operators to produce accurate bends, which helps improve consistency and overall productivity on the shop floor.

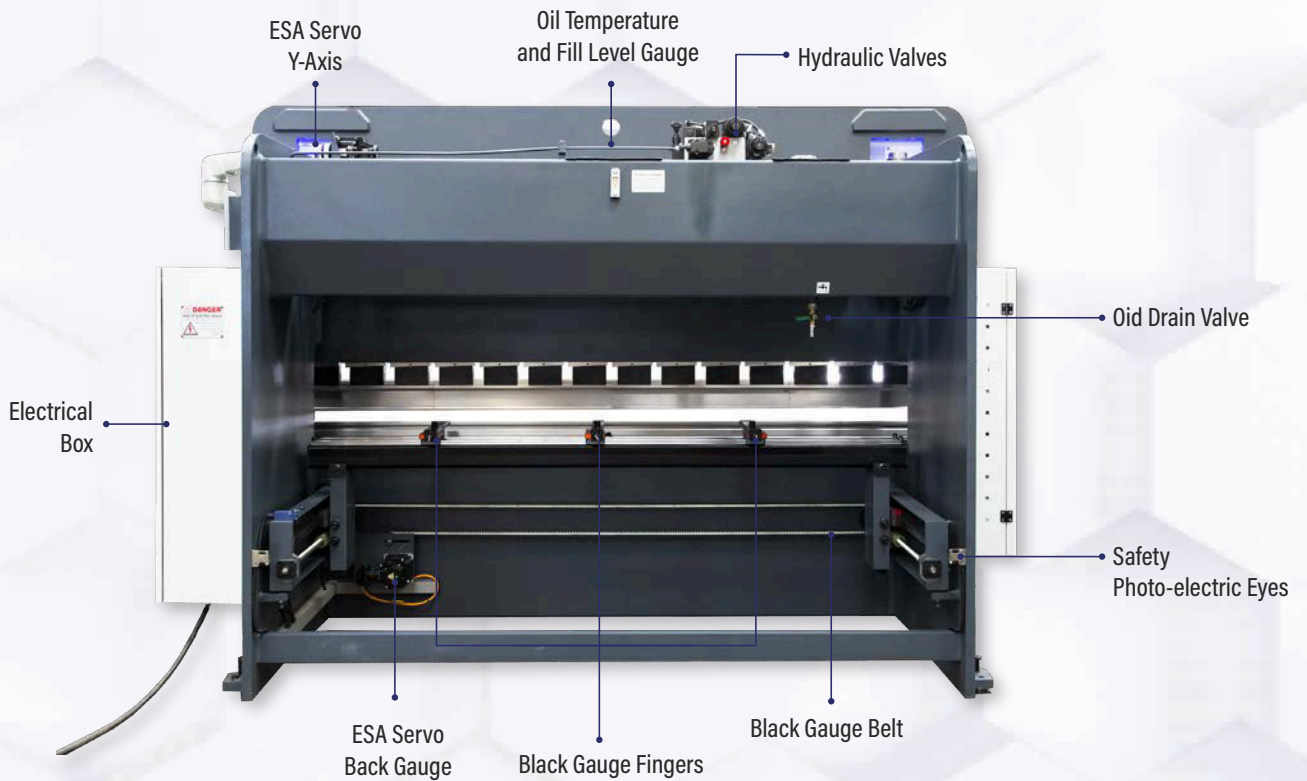
What makes ESA CNC controllers particularly appealing is their balance of affordability and versatility. They support a wide range of bending applications while offering features typically found in higher-priced control systems. This means fabricators can handle complex parts, multiple bends, and repeat jobs with confidence—all at a price point that fits within tighter budgets. For shops looking to maximize the capability of their press brake investment, ESA controllers deliver the performance needed without the premium price tag.

Available Upgrades/Options

- Upgrade ESA S930 to a different ESA controller
- Fiessler laser guarding for added safety and small part applications
- Third axis controlling back gauge height
- CNC controlled crowning
- Quick release ram clamps for fast tool changes
- Training at customer's site by a U.S. Industrial Machinery technician
- Custom tooling for specific applications



Standards That Drive Performance



Manually Controlled Press Brakes



For industries and jobs that don't require the detail and precision achieved with CNC controls, our manual control press brakes offer ease of use when you're looking to keep things simple. The manual press brakes have all the same safety features of the CNC models, manual press brakes are powerful machines that are easy to get started on and great for more straightforward jobs. They include a front-operated power back-gauge and ram adjust with digital readouts, as well as high-efficiency asynchronous motors. Our models range from 22 tons to 440 tons, and we offer custom sizing above 440 tons, as well as custom lengths up to 20'

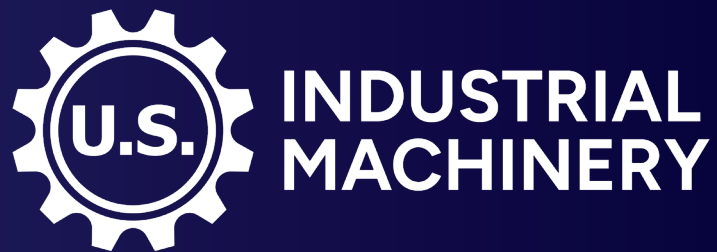


Resources

[SALES OVERVIEW VIDEO OF NEW MACHINES](#)

[PRESS BRAKE BENDING CHART](#)

[DOWNLOAD LIFTING INSTRUCTIONS](#)



120 Webster Ave, Memphis, TN 38126

P.O. Box 2098, Memphis, TN 38101

800-860-1850

901-527-8671